

OKYANUS AUTOMATIC VEHICLE WASHING SYSTEMS




ALSER
Makina Sanayi ve Ticaret Ltd. Şti.

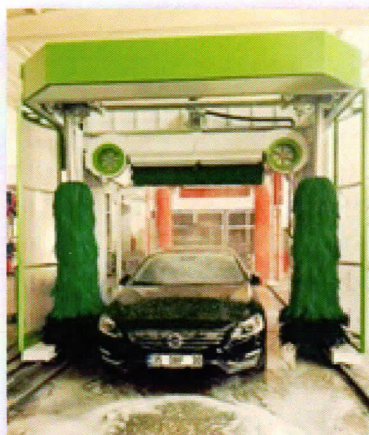
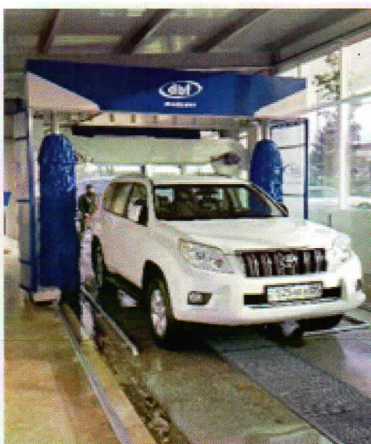


AUTOMATIC VEHICLE WASHING SYSTEMS



Okyanus types of Automatic Car Wash Machine is one of the perfect washing systems which facilitates easy maintenance and safe operation. These swing (motor-chain gear or pneumatic vertical brush trolley movement swing on 335, 350 types) system of Okyanus machines are produced with different washing heights.

Okyanus yields best washing results for small cars as well as for vans. The electronic safety systems on the top brush apply a soft, controlled and a safe wash on the vehicles. The ease and low cost maintenance requirement of this machine is the reason for the high demand. It is possible to assemble all the optional accessories easily to the machine.



General Features and Standart Equipment

- OKYANUS type of machines are products of high technology like the other DBF machines.
- The metal structure made of first grade steel sheets and are hot dip galvanised, phosphate coated and baked after electrostatic powder painted.
- The two fans are automatically positioned to dry first the roof and then the vehicles side (WD).
- All external screws are stainless steel.
- The machines are controlled by PLC computer to run different types of washing programs.
- Bristles of the brushes, gear boxes, pneumatic and electronic components are the first quality products of major European manufacturers.
- There is an electronic counter on the side pannel which counts the number of vehicles that have been washed.
- Low voltage auxillary circuits for safety .
- OKYANUS can apply shampoo (both W and WD types) and drying agent wax (only WD types) to the vehicles.
- The gantry speed can be controlled by the inverter system which works with the gantry driver motors. There for in drying operations higher efficiency is provided with low speed of gantry.
- Elevated connection supply cables over a post.
- Side brushes are designed in free swing system giving safety to facilitate cheap and ease of maintenance and use.
- A perfect washing operation on the rear, front and sides of the vehicles by the swing system function.
- The machine is equipped with anti tilt locks against wind.
- Venturi for chemical dosing,
- Painted Steel Construction Cladding (Standard on Okyanus Type)
- Emergency stop button.
- Front and Back Steel cladding,
- Textile water splash guards,
- Power controlled brushres- Trolley mounted motor chain or pneumatic movement & swing system vertical brushes (for 335 and 350 type)



Optional Accessories

- Robo - wash (100 bar pressure, pre wash equipment including piston pump),
- Chemical dosage pump,
- Wheel wash,
- Automatic winter drainage,
- Traffic lights,
- Chassis wash,
- Disinfecting arch,
- Foam arch,
- Front and Back Decorative Polyester cladding,
- Polycarbonate water splash guards,
- DBF Cabinatte



DBF OKYANUS X1

Okyanus DBF Model Three Brush Machine is a Swinging brush system. It yields best washing results for small cars, jeep as well as for vans. This Machine, brush washes with shampoo and rinses the vehicle while moving over the vehicle two times. For WD Models, the machine is washing with shampoo or foam in the first run and when coming back over the vehicle it adds rinsing aid wax and start to dry by fixed 3 strong fans. Therefore in drying operations, higher efficiency is provided with low speed of gantry.

For the WDR Models, optional 80-100 bar high pressure pre-wash (Robowash) will act before the brush washing starts in order to pre-clean the wheels, rims and the undersides of the vehicles from mud and dirt.

There is a Counter on the panel, which counts the number of vehicles that have been washed. The metal structure made of first grade steel sheets is hot dip galvanized, phosphate coated and baked after electrostatic powder painted. The operations of the machine are programmed on the inboard PLC computer. Galvanized and electrostatic powder painted sheet steel cladding, Pump for Chemical Dosing and emergency stop button are standard. The gantry drive motors work with Inverter system, so the start and stop of machine is very soft. This also prolongs the motor and the gear life. With electronically tilt switch controlled top brushes, sensitive and controlled pressure on the surface of the vehicle is obtained. The vertical brushes of DBF X1 Automatic Car Wash Machine are designed in Swing System of side brushes and all the profiles of the vehicles can be washed perfectly and safely. The ease and low cost maintenance requirement of this machine is the reason for the high demand. The machine can be equipped with all the optional accessories stated below.

OKYANUS X2

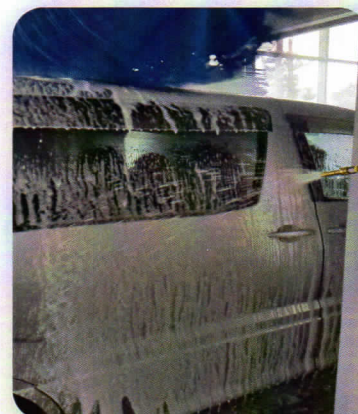
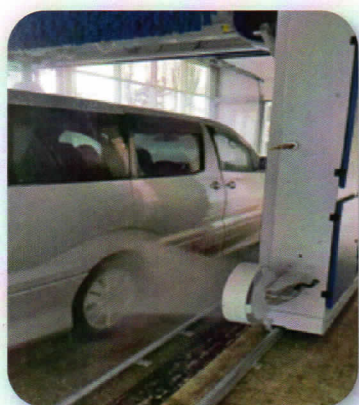
OKYANUS X2 is a swinging brush, roll-over system. Okyanus yields best washing results for small cars as well as for vans and small busses. This three brush machine, brush washes with shampoo and rinses the vehicle while moving over the vehicle two times. There is a counter on the panel, which counts the number of vehicles that have been washed. The metal structure made of first grade steel sheets is hot dip galvanized, phosphate coated and baked after electrostatic powder painted. The ease and low cost maintenance requirement of this machine is the reason for the high demand. Galvanized and electrostatic powder painted sheet steel cladding, Venturi for Chemical Dosing and emergency stop button are standard. The gantry drive motors work with inverter system, so the start and stop of machine is very soft. This also prolongs the motor and the gear life. The operations of the machine are programmed on the inboard PLC computer. Machine can be equipped with all the optional accessories



OKYANUS X3

Okyanus X3 Automatic Car Wash Machine is composed of 2 vertical brushes and one horizontal brush

It can perform shampoo or foam for washing and wax as drying agent. Vehicles are dried with the contour following of fixed top dryer. The rail length of the machine is 10 mt. and width between rails are 310 cm. 3mm thickness quality steel sheet are cut, and bended on CNC machines. After gas shielded welding, all the fabrication is hot dip galvanized, phosphate coated, electrostatic powder painted and baked at 220 °C. There is a counter on the panel which counts the number of vehicles that have been washed. The operations of the machine are programmed on the inboard PLC computer. The machine starts to washing operation when the vehicle is perceived by photocell pair. The motorised vertical brushes are designed in overlapping system of side brushes with soft start equipment so all the profiles of the vehicles can be washed perfectly and safely. The gantry drive motors work with inverter system, so the start and stop of machine is very soft. And so, this increases the motor and the gear reducer life. At the front and the back of the vehicle, the gantry moves back if there is an overload from the set power level on the brush drive motors to allow the brushes to open to wash the sides of the vehicle which reduces brush pressure on the vehicle. The top profile following of top dryer has two 3 Kw motors. All the brush sets are formed by 18 cm with brush elements put together on the shafts.



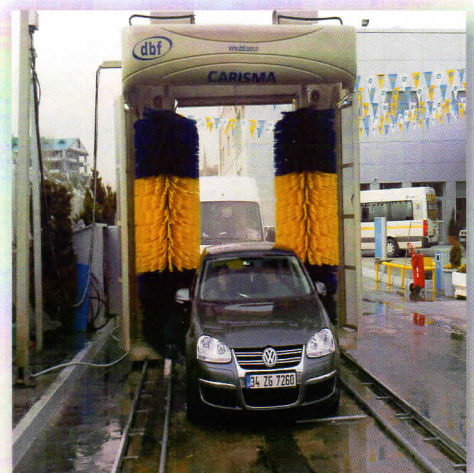
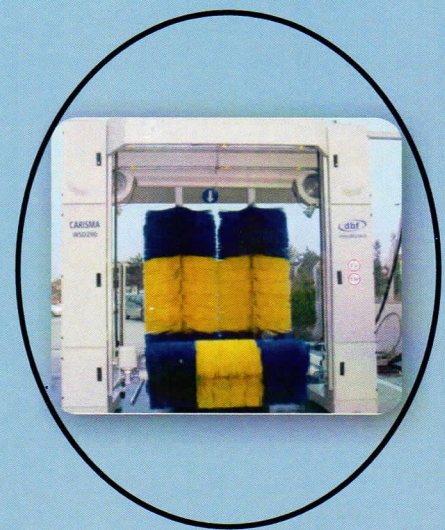
TECHNICAL SPECIFICATIONS	UNIT	W 240	W 310	W 350	WD 240	WD 290
Max. Machine Width*	cm.	360	360	390	360	360
Max. Machine Height	cm.	339	389	441	356	389
Max. Washing Height	cm.	240	310	350	240	290
Max. Washing Width	cm.	220	220	250	220	220
Rail Gauge	cm.	315	315	358	315	315
Rail Length	m.	10	10	13	10	10
Power installed	kW.	3	3	3,5	11	11
Washing Time/Vehicle	min./vehicle	2,0-2,2	2,0-2,3	2,0-2,5	2,0-2,2	2,0-2,3
Drying Time/Vehicle	min./vehicle	-	-	-	3,0-3,5	3,0-3,5
Air Pressure	bar	6	6	6	6	6
Water Pressure	bar	3,5	3,5	3,5	3,5	3,5
Air Requirement	lt/vehicle	100	100	100	130	130
Water Requirement	lt/vehicle	65-100	65-120	80-130	65-100	65-120
Electric Requirement	kWh/vehicle	0,1	0,13	0,14	0,7	0,7
Shampoo Requirement	gr/vehicle	10-20	10-30	20-40	10-20	10-30
Wax Requirement	gr/vehicle	-	-	-	10-20	10-20

* Machine width with splash guards

We keep our rights to change any technical specification any time

CARISMA

- CARISMA Automatic Car Wash Machine is composed of 2 vertical brushes and one horizontal brush
- It can perform shampoo or foam for washing and wax as drying agent.
- Vehicles are dried with the contour following top dryer.
- The rail length of the machine is 10 mt. and width between rails are 310 cm.
- 3mm thickness quality steel sheet are cut, and bended on CNC and NC machines. After gas shielded welding, all the fabrication is hot dip galvanized, phosphate coated, electrostatic powder painted and baked at 220 C.
- There is a counter on the panel which counts the number of vehicles that have been washed.
- The operations of the machine are programmed on the inboard PLC computer. The machine starts to washing operation when the vehicle is perceived by photocell pair.
- The vertical brushes are designed in overlapping system with soft start equipment so all the profiles of the vehicles can be washed perfectly and safely.
- The gantry drive motors work with inverter system, so the start and stop of machine is very soft. And so, this increases the motor and the gear reducer life. At the front and the back of the vehicle, the gantry moves back if there is an overload from the set power level on the brush drive motors to allow the brushes to open to wash the sides of the vehicle which reduces brush pressure on the vehicle.
- The top profile following of top dryer has two 3 Kw motors.
- All the brush bristles are mounted on high quality extruded light aluminium shafts and the brush sets are formed by 18 cm with brushes put together on the shafts.
- The wheel and rim can be washed by wheel wash system (optional) with two round brushes when the vehicle wheel is perceived by photocell.
- Glassfibre Cladding is installed on the machine

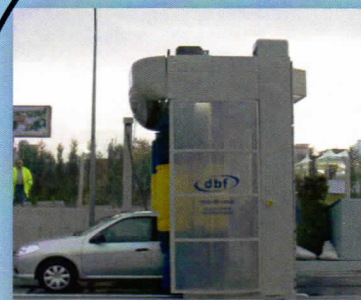


CARISMA STANDARD ACCESSORIES

- Inverter controlled Gantry Drive Motor
- Overlapping System Vertical Brush
- Contour Following Top Dryer
- Water and Chemicals distribution arches
- Brushes
- Foam Arch
- Automatic Start Up with Photocell
- Decorative Glassfibre Cladding
- Galvanised Rails 10 mt
- Traffic Light with High Brilliance LED's
- Manuel frost Protection
- Wheel Guide
- Emergency Stop Button
- Chemical Dosage Pump (each)

Optional accessories

- Robo-wash (100 bar pressure)
- Foam application system
- Automatic Start with photocells
- Chassis wash
- Magnetic Card Reader or Coin operated start
- Decorative cladding



TECHNICAL SPECIFICATIONS	UNIT	W190	W250	W310	WD190	WD240	WD290
Max. Machine Width*	Cm.	390	390	390	361	390	390
Max. Machine Height	Cm.	250	335	370	390	335	370
Max. Washing Width	Cm.	220	220	220	220	220	220
Max. Washing Height	Cm.	190	250	300	190	250	300
Rail Gauge	Cm.	310	310	310	310	310	310
Rail Length	M.	10	10	10	10	10	10
Power Installed	kW.	3	3	3	11	11	11
Washing Time	M/min.	2	2	2-2,5	2	2	2-2,5
Drying time	M/min.	-	-	-	3-3,5	3-3,5	3-3,5
Air pressure	Bar	6	6	3,5	6	6	6
Washing Pressure	Bar	3,5	3,5	100	3,5	3,5	3,5
Air requirement	lt/vehicle	100	100	70-110	100	100	100
Water Requirement	lt/vehicle	10-110	70-110	70-110	70-100	70-110	70-110
Electric Requirement	Kwh/vehicle	0,15	0,15	0,15	0,7	0,7	0,7
Shampoo Requirement	Gr/vehicle	10-20	10-20	10-20	10-20	10-20	10-20
Wax requirement	Gr/vehicle	-	-	-	20	20	20



ALSER MAKİNE SAN.TİC.LTD.ŞTİ.

Fatih Mah. 1191 Sk. No:15/A Sarnıç-Gaziemir-İZMİR

Tel: +90 232 281 25 65 Fax: +90 232 281 25 28

www.dbf.com.tr